

# Hackmead Solar Farm

---

Presented By – Tyler Hill  
Consulting



**TYLER HILL  
CONSULTING**

# About Us



Tyler Hill Consulting – a renewable energy developer who specialises in end-to-end development of onshore renewable energy assets across the UK from origination all the way through to Ready To Build (RTB).

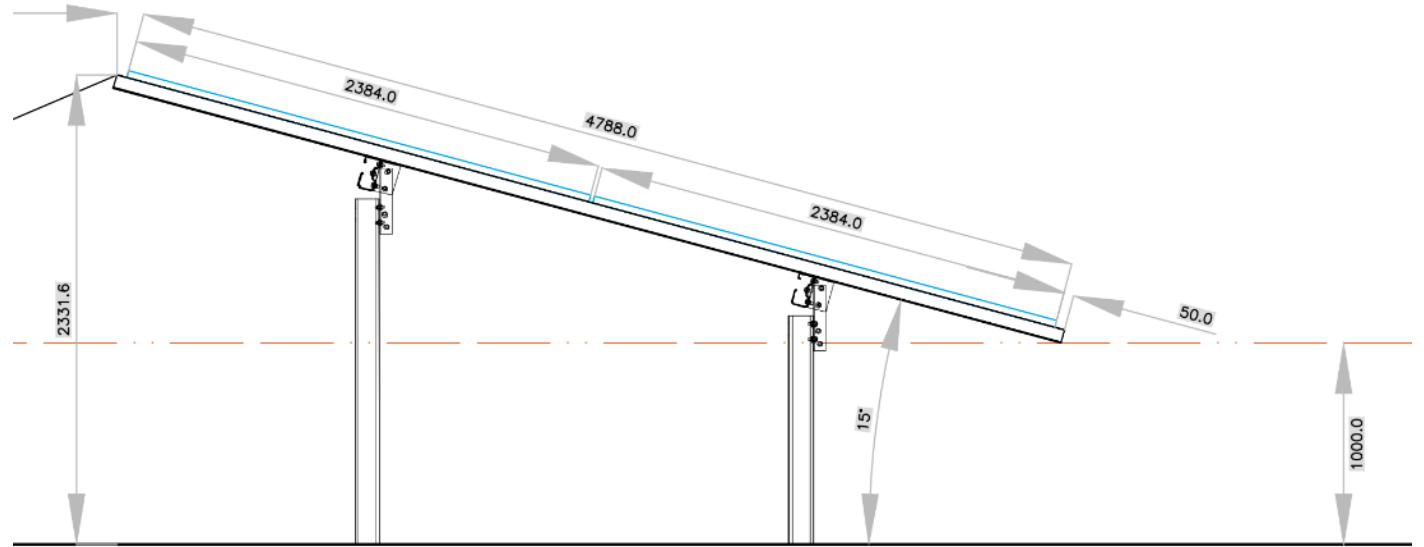
Zenexa Renewables Limited - has been set up to own the projects long term, with the goal to becoming a leading Independent Power Producer (IPP) platform to support in the UK's transition towards net zero. Tyler Hill Consulting is now part of the Zenexa group.

Our investors are Capeon, a global family office and execution-led capital platform, backed by Strategic Wealth Advisors DMCC.

# What is solar PV?

Ground mounted solar PV consists of:

- The solar PV panel – this collects the solar energy
- Mounting structure – piled into the ground, no concrete required
- Inverters at back – collecting the power from the panels and transporting, via cable, to the project substation



# The Site

**Address** - Land at Hackmead Farm, Charlton Road, Holcombe, Radstock, BA3 5EU (Red site pictured)

## How to get your bearings:

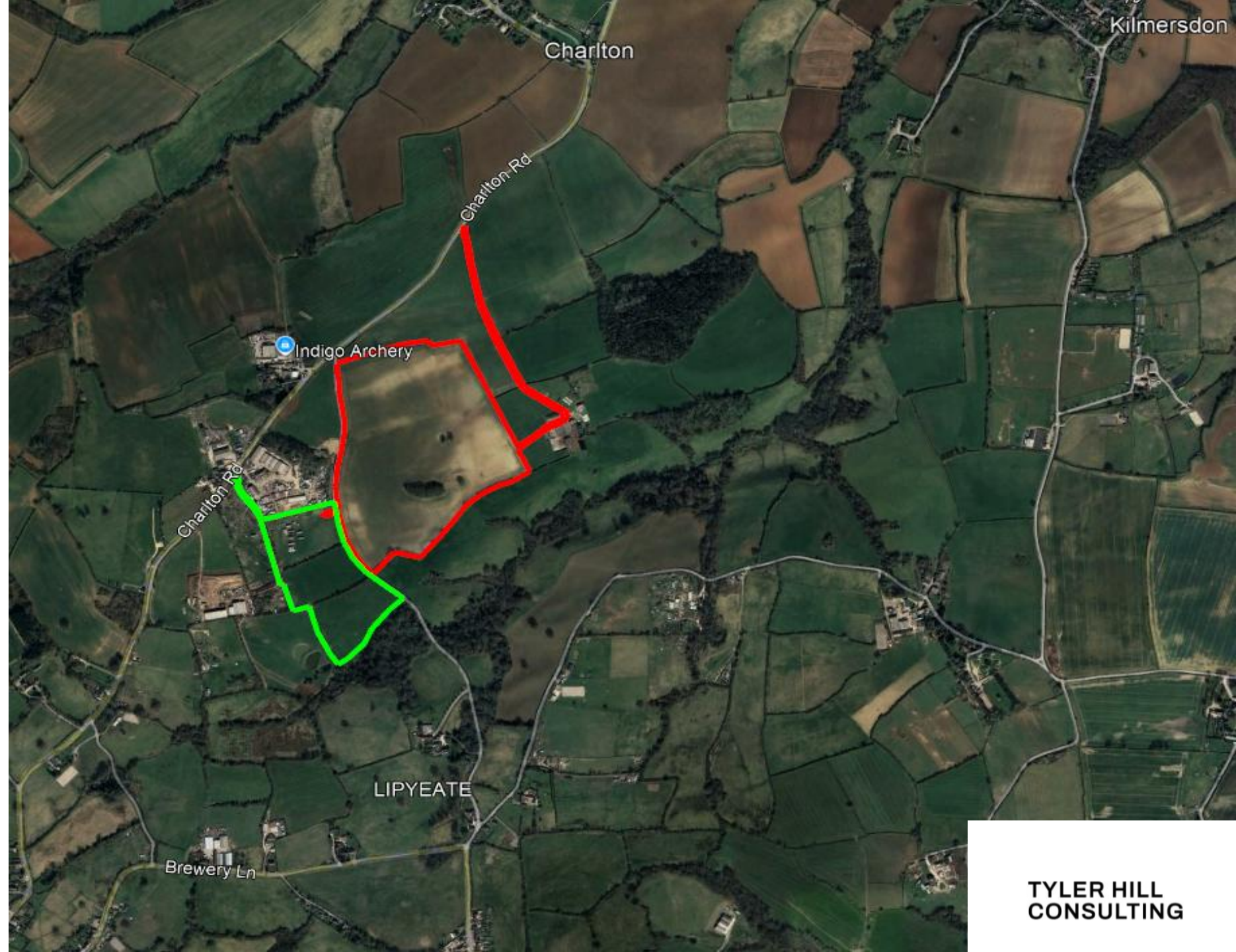
- Charlton Road (north)
- Anchor Road (West)
- Charlton (North)
- Kilmersdon (North East)
- Highbury (South)

## Parish Councils:

- Coleford – Solar panels
- Kilmersdon – Hackmead Farm yard and parts of access track

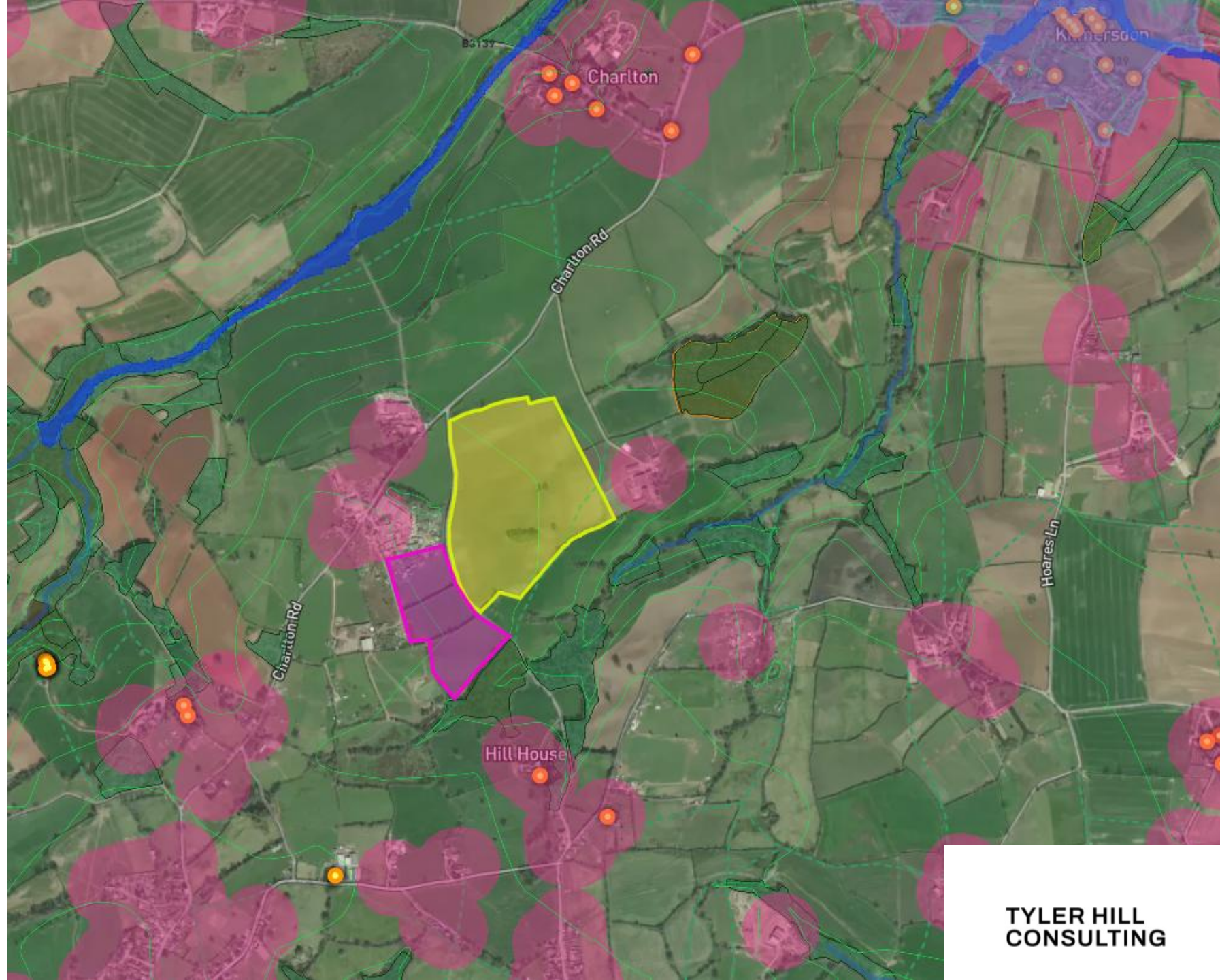
## Size:

- 16 hectares, producing 7MW of energy



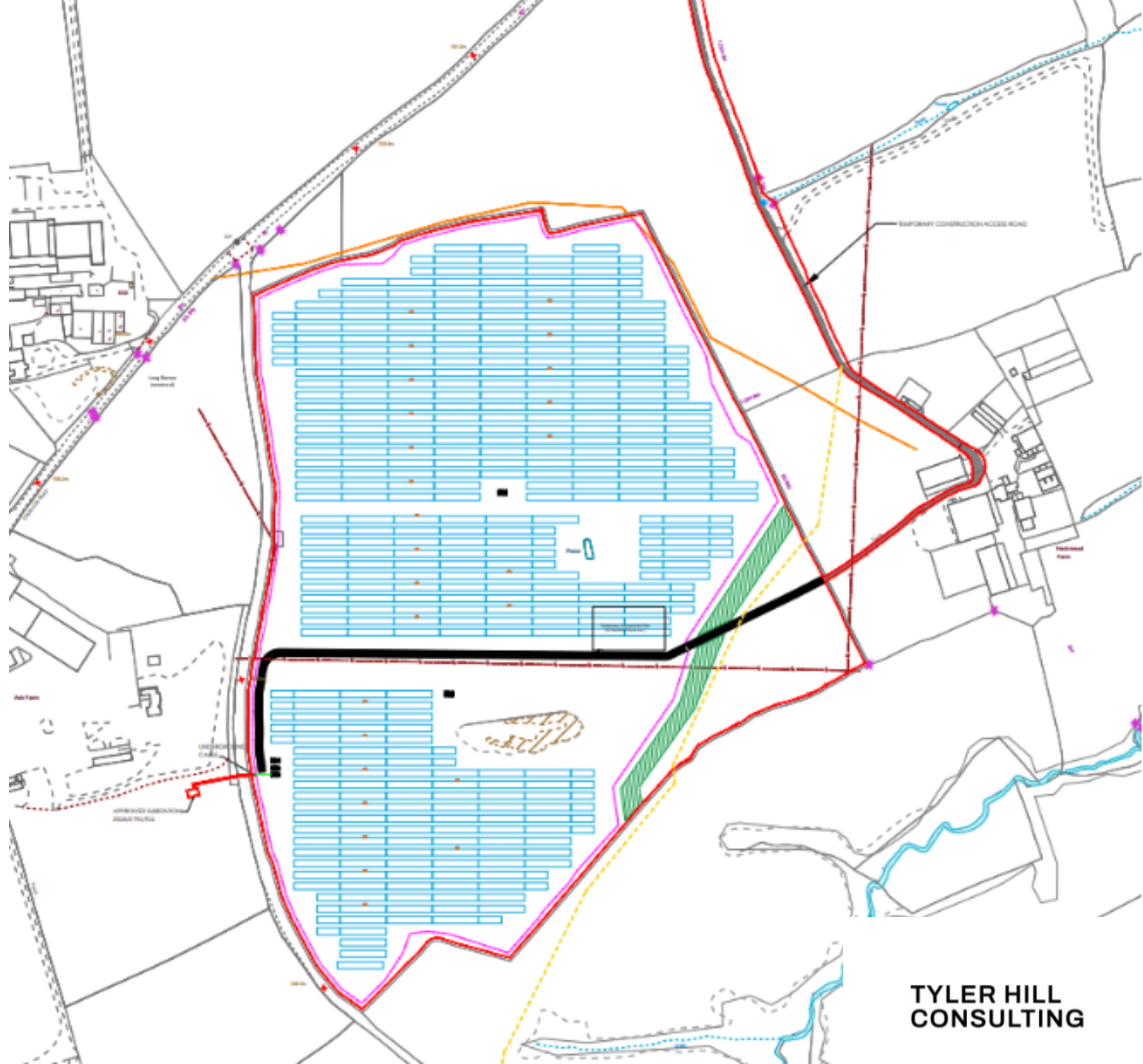
# Site Selection

- Grid connection
- Proximity to Ash Solar Farm
- Land availability
- Limited Visibility
- Consideration of neighbours
- Lower quality agricultural land
- No ecological designations
- Accessibility



# Preliminary Proposal

- At this point in time, it is estimated that the scheme will generate enough clean energy to power approx. 3,707 homes each year, avoiding approx. 2,078 tonnes of Co2 every year.
- Use of existing access point and track
- No removal of trees or hedges, with additional planting proposed
- Significant uplift in on-site biodiversity
- Local job creation during construction
- No development East of the PRow in the South East
- Underground cabling between Hackmead Solar Farm and Ash Solar Farm





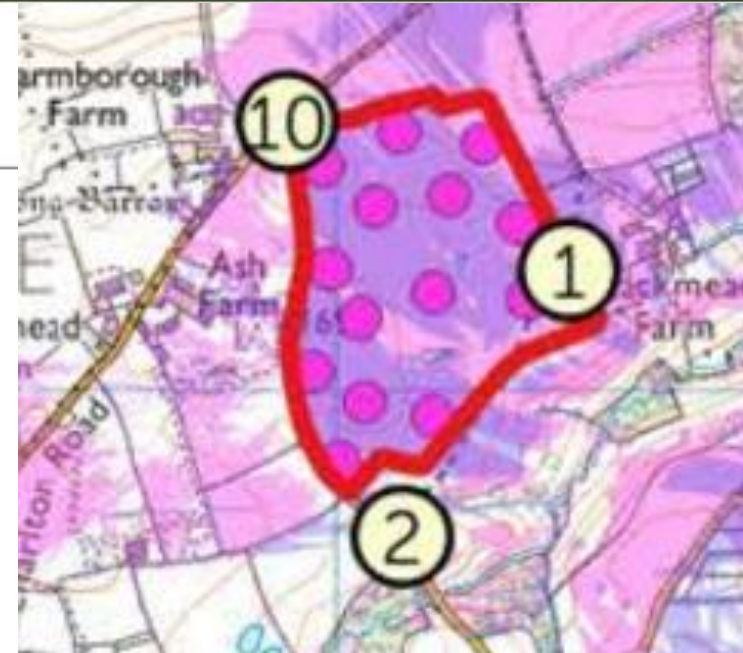
WIDE ANGLE BASELINE PANORAMA OF EXISTING VIEW TOWARDS THE PROPOSED DEVELOPMENT

THIS IMAGE PROVIDES LANDSCAPE AND VISUAL CONTEXT ONLY

#### VIEWPOINT 1:

View from Public Right of Way (LPA ref: FR4/1) passing through the Site

Grid Reference	368325, 151160
Elevation	151m AOD
Distance to nearest Site Boundary	Situated within the Site
View Direction	W/270 degrees
Paper Size	420 x 297 mm A3
Camera	Sony A7 II
Lens	Sony E-mount E50mm F1.8oss
Projection	Cylindrical
Photograph Date and Time	04/03/2026 @ 12.58 (24HR CLOCK)



APPROXIMATE LOCATION OF THE SITE



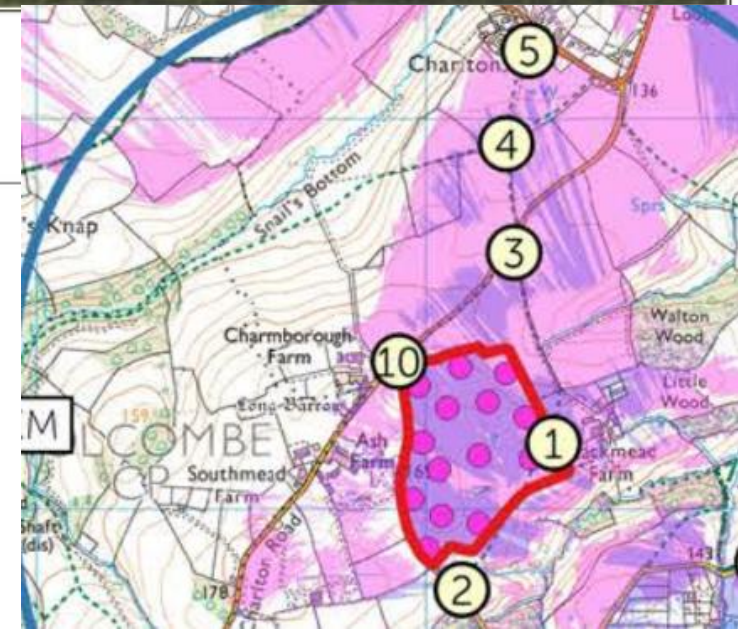
WIDE ANGLE BASELINE PANORAMA OF EXISTING VIEW TOWARDS THE PROPOSED DEVELOPMENT

THIS IMAGE PROVIDES LANDSCAPE AND VISUAL CONTEXT ONLY

**VIEWPOINT 4:**

View from Public Rightt of Way (LPA ref: FR7/13) passing within close range of the Site to the north, looking southwest

Grid Reference	368207 , 151930
Elevation	137m AOD
Distance to nearest Site Boundary	0.55km EN00 degrees
View Direction	S/180 degrees
Paper Size	420 x 297 mm A3
Camera	Sony A7 II
Lens	Sony E-mount E50mm F1.8oss



# Indicative Timeline for Hackmead Solar Farm

February 2026 – EIA screening and pre-application submission

March 2026 - Engage with Parish Councils and Community Groups

Late April/ Early May 2026 – Public consultation event

Mid-May 2026 – Design freeze and finalise submission

Late June/ early July 2026 – Submit formal planning application



# Thank you. Any Questions?

Max Gibson

Head of Planning

[max@tylerhillconsulting.com](mailto:max@tylerhillconsulting.com)

Alex Fornal

Head of Land and Strategy

[alex@tylerhillconsulting.com](mailto:alex@tylerhillconsulting.com)